

The Stadium FastPass™ Series Waist-High

Bolt Down • Interior and Exterior Application

FP500

FP500-C • FP500-T

The Stadium FastPass™ Series is made for years of reliable service in high traffic/volume applications like stadiums, convention centers, landmarks and military bases. The cabinets are constructed of heavy 14-gauge, 300 series satin stainless steel and feature our 6500 Series Control Head (with auto indexing and shock suppression technology). Thousands are currently in use at leading pro-sports venues, amusement parks and high-profile attractions worldwide. The Stadium FastPass is the ticket to managing large crowds with reliability and speed.



FP500



FP500-C (coin)



FP500-T (ticket box)

We're the #1 Choice of Top Architects, Security Pros and Engineers

For two decades, www.Turnstiles.us has been a trusted name in pedestrian control equipment. Made in Ohio and shipped worldwide, we are the first choice of leading architects, facility managers, security consultants and engineers. Whether your project requires high security full-height turnstiles, waist-high units, or matching ADA accessible gates, www.Turnstiles.us is the secure choice. And, we're experienced in access control systems, from card readers to biometric scanning, to give you the power to control access.



Applications:

This series is made for years of reliable service in high traffic / volume environments like stadiums, convention centers, amusement parks, landmarks and military bases.

Material:

- Our signature 304 stainless steel/ No. 4 satin finish

Design & Construction:

- Designed for secure operation with aesthetics in mind
- Cabinet inner and outer shells are constructed of (14 gauge) 304 stainless steel/ No. 4 satin finish
- Arms constructed of 1-5/16" (33mm) diameter (12 gauge) stainless
- Hub 4-1/2" (114mm) o.d. also made from stainless
- Minimal exposed hardware

Measures:

- Height: 37" (940mm)
- Width (standard): 27.25" (692mm)
- Width (-C/-T): 33.25" (845mm)
- Depth: 8.625" (225mm)



Matching portable turnstile:
FP500-P.

Operations:

6500 Series Control Head, featuring:

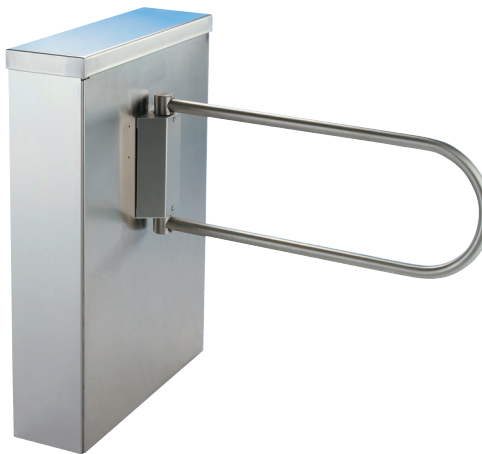
- Auto-indexing (self-centering) with adjustable hydraulic shock suppression
- Hardened tool steel locking bars, cam and roller assemblies
- Permanently lubricated bearings
- Your choice of manual or electronic control on both directions
- Nearly universal integration to any number of access control systems
- Your choice on each electronic direction of locking or unlocking on power failure

Options:

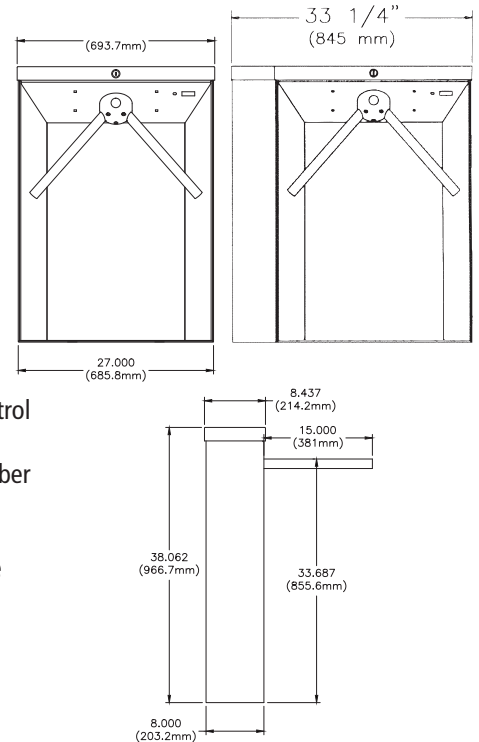
- Bidirectional key overrides
- Daylight visible indicator lights
- 8 digit key resettable LCD counter with seven year lithium battery
- Rubber arm covers
- Coin/token acceptor
- Bill acceptor
- Ticket drop box
- Additional options available on request

Warranty:

Units are warranted against defects in materials and workmanship for a period of one year from date of delivery. See warranty information for specific details.



Matching ADA gate (FP500-ADA) with optional motorization) is available for the FastPass Series.



Dimensions are approximate.

Electrical Specifications:

Input Voltage: 100-240 VAC
Input Current: 1.3 - .55 A
Frequency: 50/60 Hz
Storage Temperature: -4 to 158 °F
Operating Temperature: 32 to 122 °F
Operating Voltage: 24VDC
Operating Current: 1.2 A (typical)

Standards and Codes:

Austenitic stainless steel:
ASTM A240, A249, A276
Hot rolled steel:
AISI C-1020, AISI C-1018
Hot dipped galvanizing:
ASTM A-143, ASTM A-153-80
Stainless steel fasteners:
ASTM A-320

American Welding Society (AWS)
Standard D 1.1



The 6500 series control head is certified to conform to UL Standard 325 & UL Subject 2593



Controlled Access, Inc. is a registered ISO 9001:2008 company